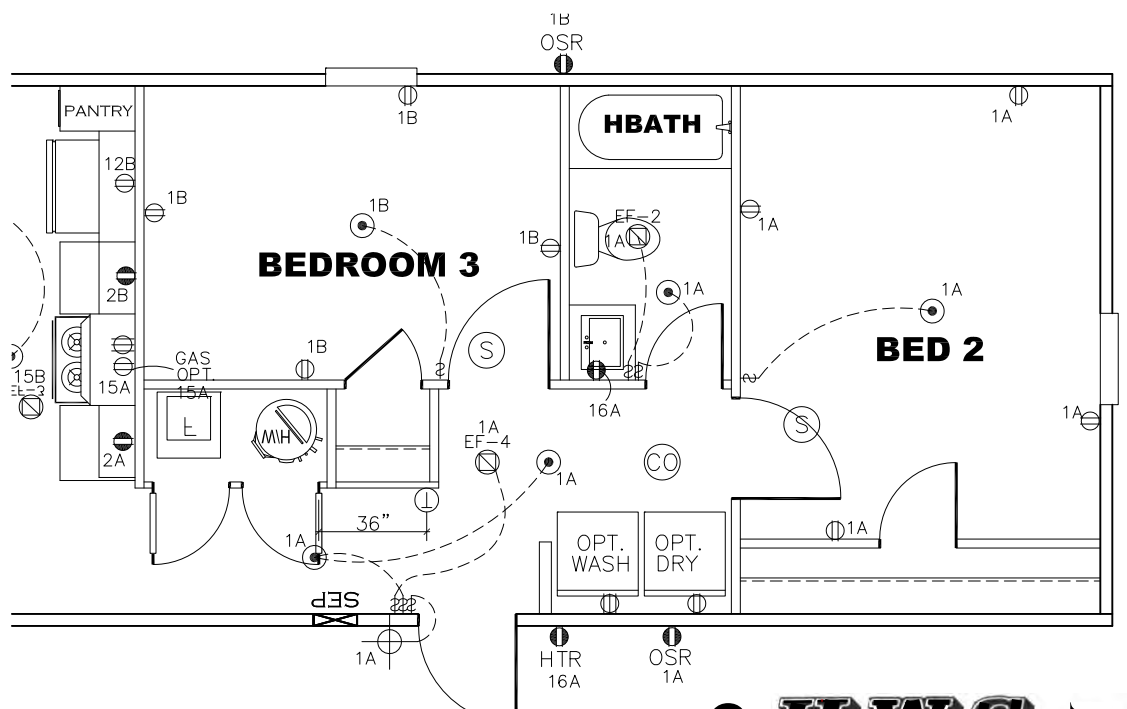
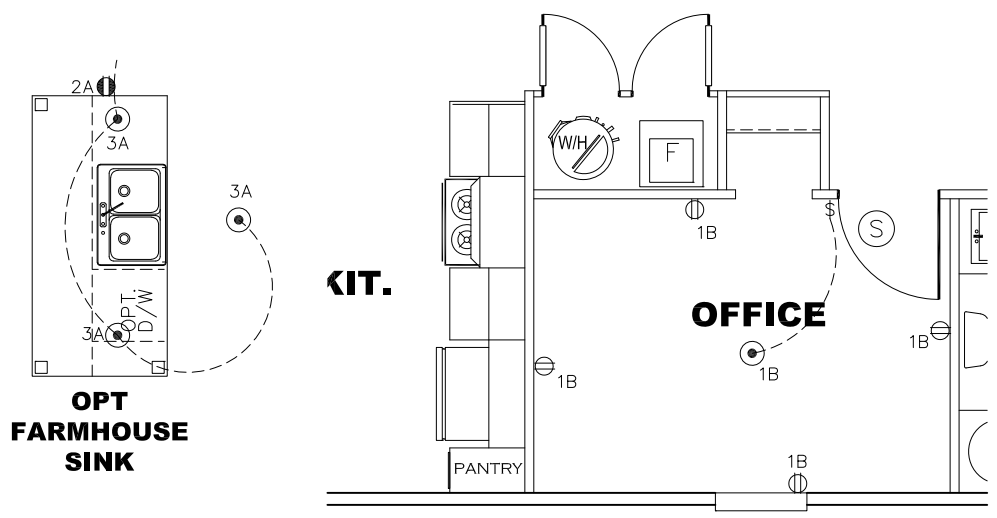


- NOTES:
1. ALL CIRCUITS SHOWN ARE FOR REFERENCE AND MAY BE CHANGED BASED ON OPTIONAL COMPONENTS INSTALLED IN THE HOME.
 2. REFER TO DAPIA MANUAL FOR SYMBOL CHART.
 3. EITHER LIGHT OR RECEPTACLE MUST CONNECT TO SWITCH.
 4. EF-1= 50 CFM EXHAUST FAN REQUIRED FOR THERMAL ZONE III THERMAL ZONES I & II MAY USE FAN OR WINDOW W/1.5 SQ. FT. OPENABLE GLASS.
 5. EF-2= 50 CFM EXHAUST FAN REQUIRED THERMAL ZONE I, II, AND III.
 6. EF-3= 100 CFM RANGE EXHAUST FAN, SWITCH AT HOOD.
 7. EF-4= WHOLE HOUSE VENTILATION REQUIREMENTS PER DAPIA MANUAL.
 8. REFER TO DAPIA MANUAL OR THE MFG. INSTALLATION INSTRUCTIONS FOR PROPER WIRE SIZE AND BREAKER SIZE FOR SPECIFIC APPLIANCE AND MODEL BEING INSTALLED.
 9. ALL SMOKE ALARMS TO BE LOCATED ON THE CEILING.
 10. CARBON MONOXIDE ALARMS ARE ONLY REQUIRED WHEN HOME HAS EITHER FUEL BURNING APPLIANCES, IS GARAGE READY OR IS BASEMENT READY. REFERENCE DAPIA MANUAL FOR ADDITIONAL INFORMATION.
 11. DIMENSIONS SHOWN ON PRINT ARE APPROXIMATE AND TO BE USED ONLY AS A GUIDELINE.



CIRCUIT	CIRCUIT #	WIRE	BREAKER	CIRCUIT	CIRCUIT #	WIRE	BREAKER	CIRCUIT	CIRCUIT #	WIRE	BREAKER
LIGHT/RECEP	1A,1B,3A,3B	14-2	15-SP	DRYER	5A,7B	SEE NOTE #8		BATHROOM	16A	12-2	20-SP
LIGHT/RECEP	13B,14A,14B	14-2	15-SP	WATER HEATER	4A,6B	SEE NOTE #8		OPT G/DISP	9B	SEE NOTE #8	
KITCHEN	2A,2B	12-2	20-SP	RANGE	5B,7A	SEE NOTE #8		OPT SPA/ WP/JAC	11A,B	SEE NOTE #8	
WASHER	12A	12-2	20-SP	FURNACE	6A,8A,B,10A,B	SEE NOTE #8		FREEZER	13A	SEE NOTE #8	
RANG HOOD/ MICROWAVE	15B	SEE NOTE #8		OPT D/WASH	9A	SEE NOTE #8		OPT ELEC. FIREPLACE	16B	SEE NOTE #8	
OPT. GAS RANG	15A	SEE NOTE #8		SMOKE/CO DECT	4B	SEE NOTE #8					
				REFER	12B	SEE NOTE #8					

APPROVED

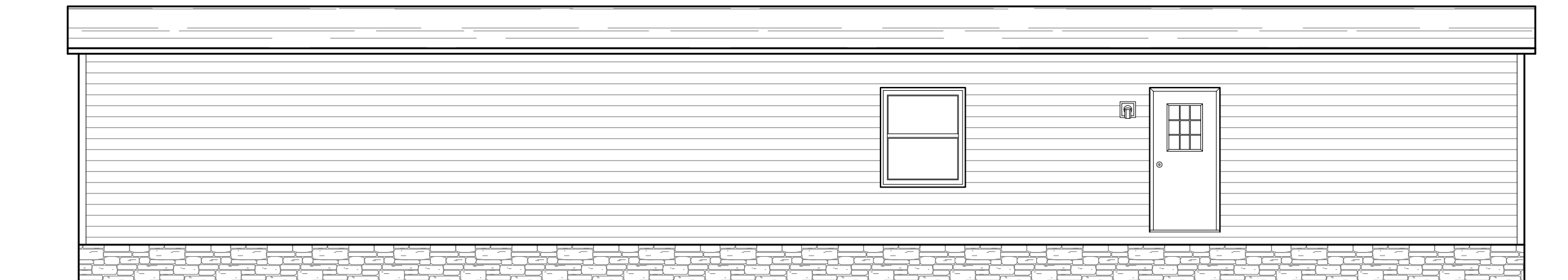
HWG

APPROVED

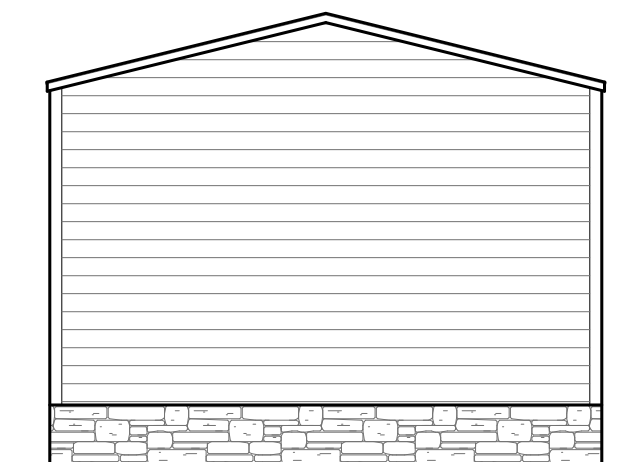
APR 10 2024
REVISED
FP-16-2446
Federal Manufactured
Home Construction
And Safety Standards

1165 SQ.FT. (STD PLAN "CONDITIONED")

CMH MANUFACTURING	Model #: MAC16763A	Drawing #:
	Date: 6/3/19	Scale: N.T.S. 2251G3
Product Designer: Bf		16 x 76 MAC
ELECTRICAL PLAN-06		



REAR ELEVATION



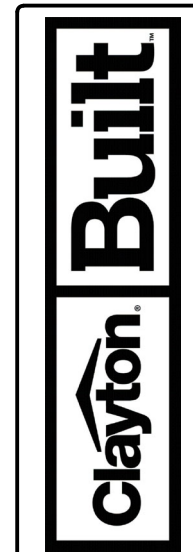
LEFT SIDE ELEVATION



RIGHT SIDE ELEVATION



FRONT ELEVATION



REVISION	DATE

MODEL NAME MAC	MODEL NO. MAC16663A	MODEL SQ. FT. 1034
BOX SIZE 16' x 66'		

DRAWN BY
Braden French

DATE DRAWN
6.11.24

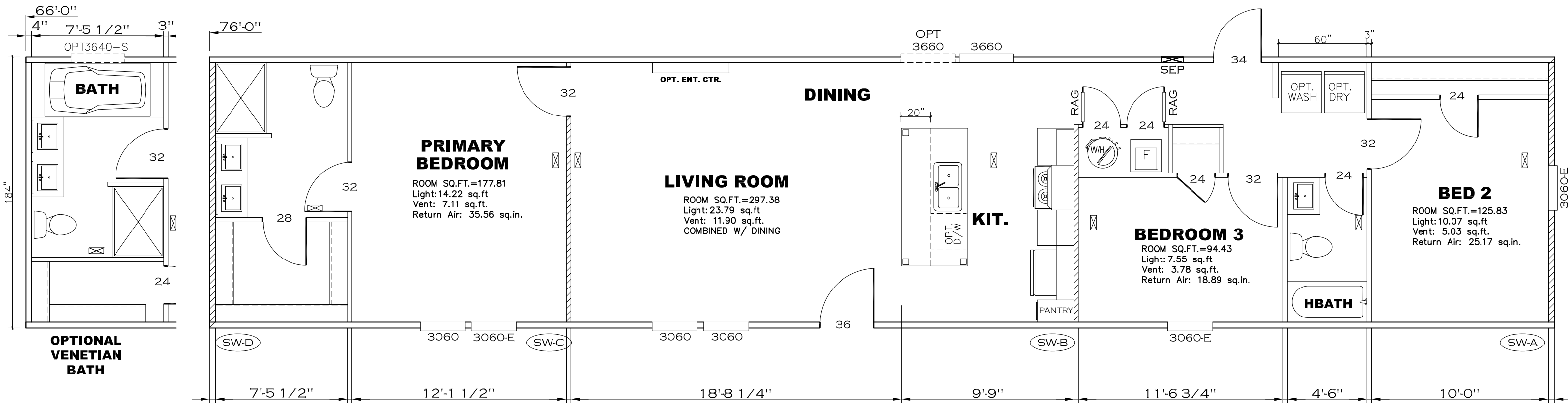
DATE PRINTED
7/3/2024

SCALE
1/4"=1'

PLAN NO.
22s162

SHEET NAME
ELEV.

SHEET NO.
EX-1.



Model # 22S163

Box Width = 184" Single wide
Box Length = 76 ft. 99.5" 10" MIN.IBEAM
No Skylights
No Porches
Joist Size = #2 sp 2x6 Lags 9Mx3"

Minimum Joist Spacing 16"
No Offset Box
No Clerestory
No Origami Dormer
No Sunken Floor
No Parapet Roof

Designed By: JDC
6/22/23

Version R13.14

* Denotes that indicated shearwall is over full depth/width front steel chassis header.

Wind Zone 1 Standard Roof (3/8" sheathing only with 15 gax 1.5" at 5"/10" oc. 96 inch sidewall)
Diaphragm Construction: (197 plf) Chords: 2x4 SPF #3 Top Plate spliced w/ 3x4 MCP & 1x6 SPF Rail spliced w/ 3x4 MCP

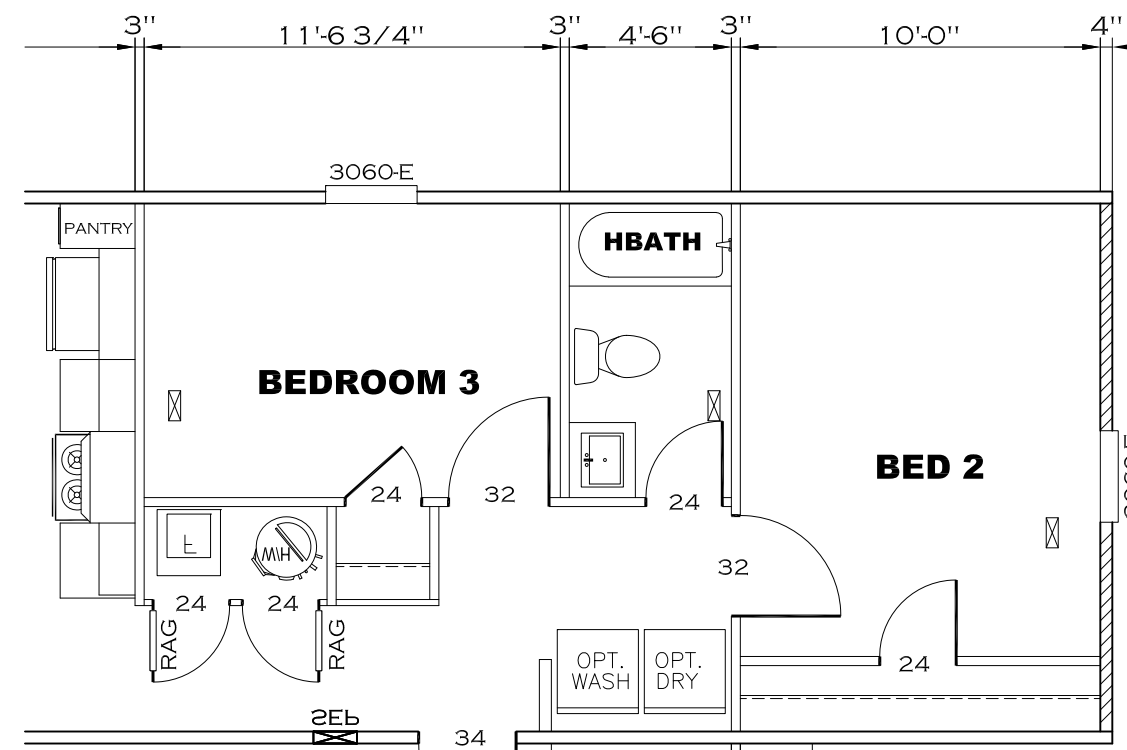
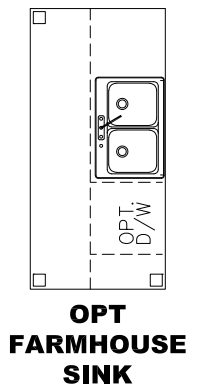
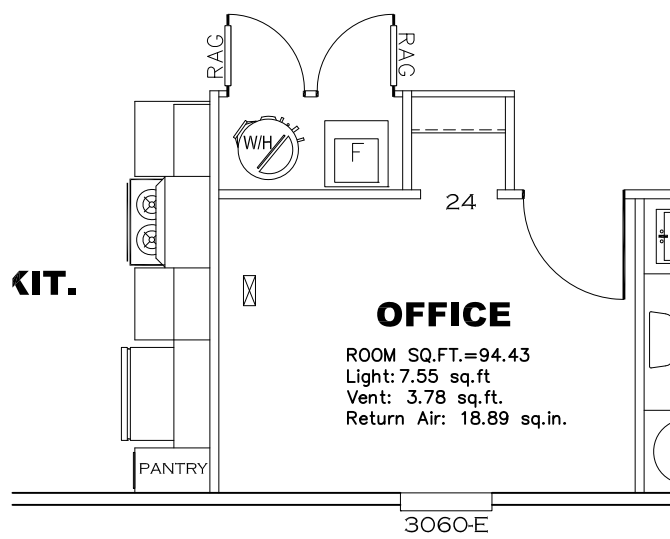
Shearwall	Dist./ Hitch	Length	PLF	# of Joists	Lags	Notes	SW1/SW2
A	0'	145.5"	425	2	4/4	Split Shearwall *	69.75/75.75
D	76'	172"	162	2	2/1		

Wind Zone 2 Standard Roof (3/8" sheathing only with 15 gax 1.5" at 5"/10" oc. 96 inch sidewall)
Diaphragm Construction: (197 plf) Chords: 2x4 SPF #3 Top Plate spliced w/ 3x4 MCP & 1x6 SPF Rail spliced w/ 3x4 MCP

Shearwall	Dist./ Hitch	Length	PLF	# of Joists	Lags	Notes	SW1/SW2
A	0'	145.5"	425	2	4/4	Split Shearwall *	69.75/75.75
B	26.46'	128"	425	2	4/1		
C	55.71'	128"	425	2	4/1		
D	76'	120"	162	2	2/1		

Wind Zone 3 Standard Roof (3/8" sheathing only with 15 gax 1.5" at 5"/10" oc. 96 inch sidewall)
Diaphragm Construction: (197 plf) Chords: 2x4 SPF #3 Top Plate spliced w/ 3x4 MCP & 1x6 SPF Rail spliced w/ 3x4 MCP

Shearwall	Dist./ Hitch	Length	PLF	# of Joists	Lags	Notes	SW1/SW2
A	0'	145.5"	425	2	4/4	Split Shearwall *	69.75/75.75
B	26.46'	128"	515	3	5/2		
C	55.71'	132"	425	2	4/1		
D	76'	144"	162	2	2/1		



APPROVED

HWC

JAN 09 2024
REVISED
FP-16-2446
Federal Manufactured
Home Construction
And Safety Standards

APPROVED

OPT. FLIPPED BEDROOMS

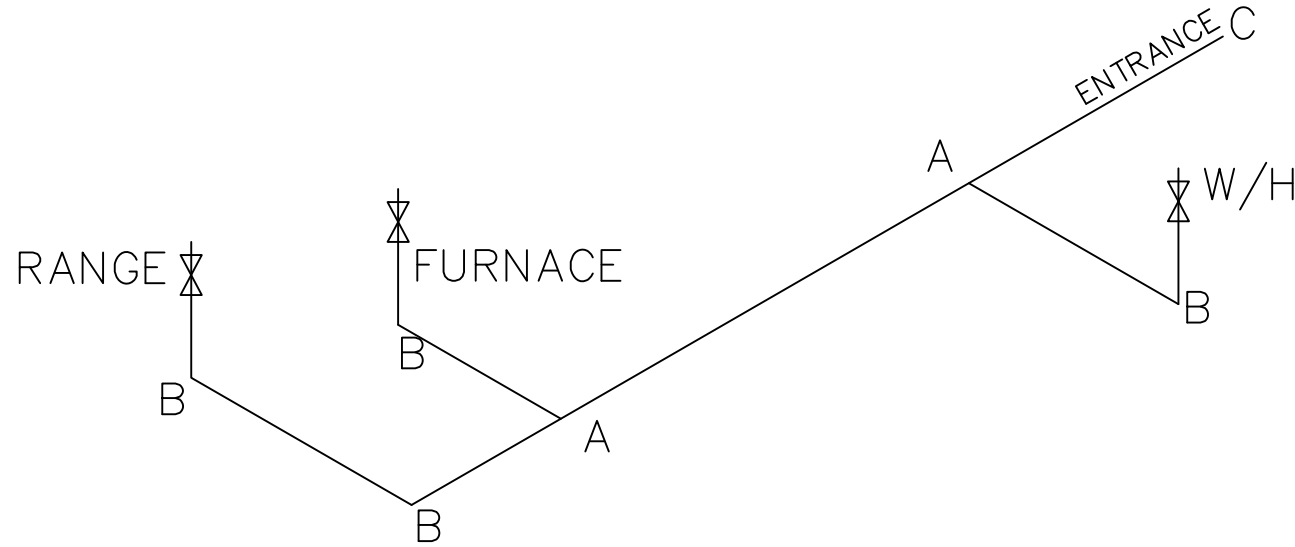
1165 SQ.FT. (STD PLAN "CONDITIONED")

CMH MANUFACTURING	Model #: MAC16763A Date: 6/3/19	Drawing #: 2251G3 Scale: N/A
Product Designer: B/F		16' x 76' MAC

FLOOR PLAN

MDL=30'


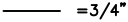
LEGEND		APPLIANCE BTU'S RATINGS MAX. INPUT	
SYM	FITTINGS		
A	TEE	FURNACE	70,000 BTU'S
B	90 ELL	W/H	36,000 BTU'S
X	VALVE	RANGE	56,000 BTU'S
C	CAP	DRYER	N/A BTU'S



NOTES:

- 1) ALL PIPE IS 3/4" I.D.CAST (EXCEPT WHERE NOTED OTHERWISE)
- 2) MDL=MAX. DETERMINED LENGTH OF PIPE
- 3) FITTING MAY BE ADDED OR SUBTRACTED TO TRAVERSE VARIATIONS IN AXLE QUANTITY, PLACEMENT, AND FRAME TYPE.
- 4) INLET LOCATION MAY VARY TO STAY WITHIN MAX. DETERMINED LENGTH
- 5) ALL RISERS ARE 1/2" UNLESS OTHERWISE NOTED

APPROVED **HWG** **APPROVED**
 05 JUN 2019
 FP-16-2446
 Federal Manufactured
 Home Construction
 And Safety Standards

GAS LINE SIZE CHART	
	= 1"
	= 3/4"

1165 SQ.FT. (STD PLAN "CONDITIONED")
 N/A SQ.FT. (W/OPT. PORCH/RECESS "CONDITIONED")

CMH MANUFACTURING	Model #: MHR16763A	Drawing #:
	Date: 6/3/19	Scale: N/A
Product Designer: E HARDWICK		16' x 76' MHR/MAC
GAS LINE DETAIL		

APPROVED



APPROVED

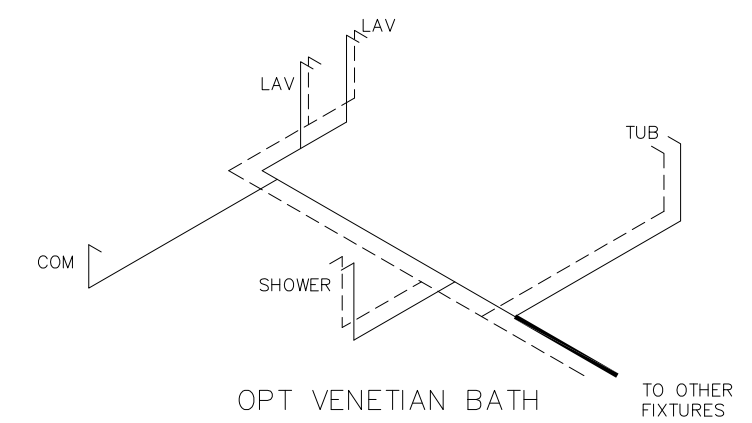
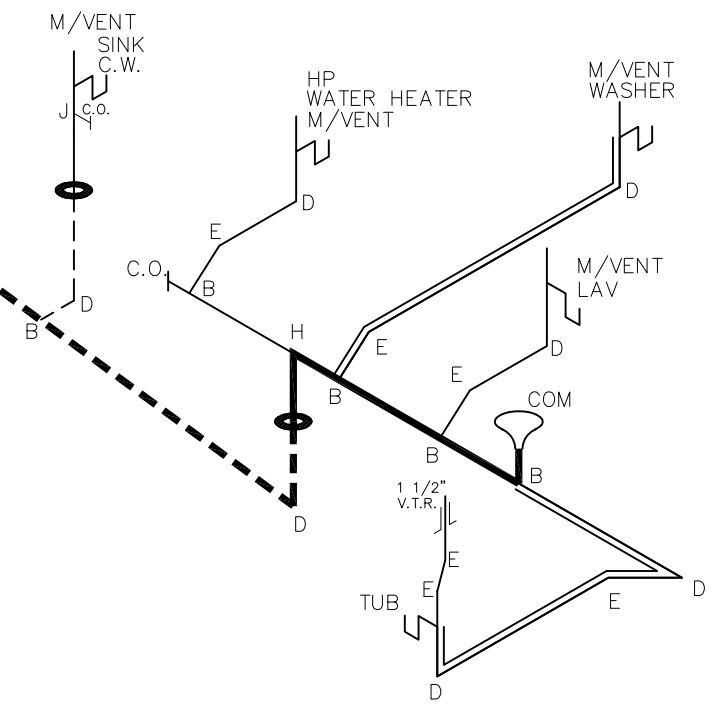
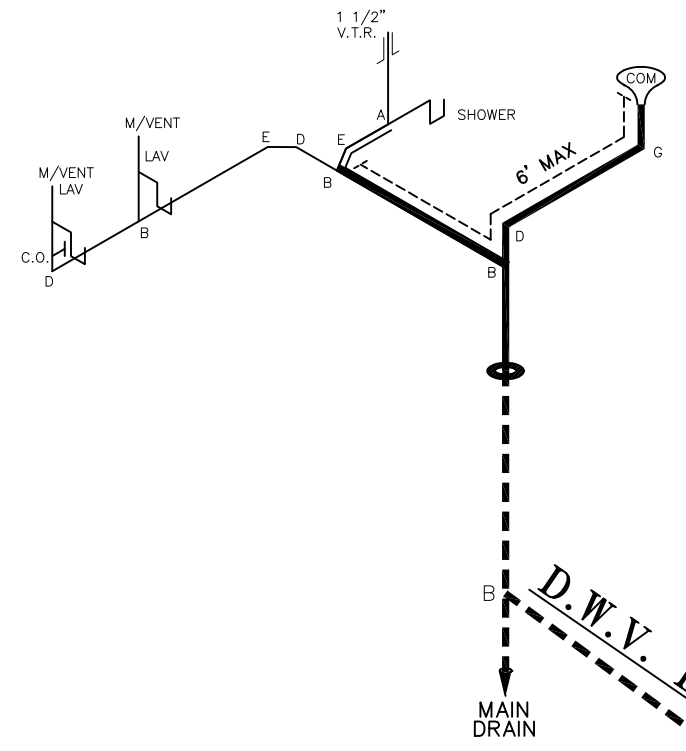
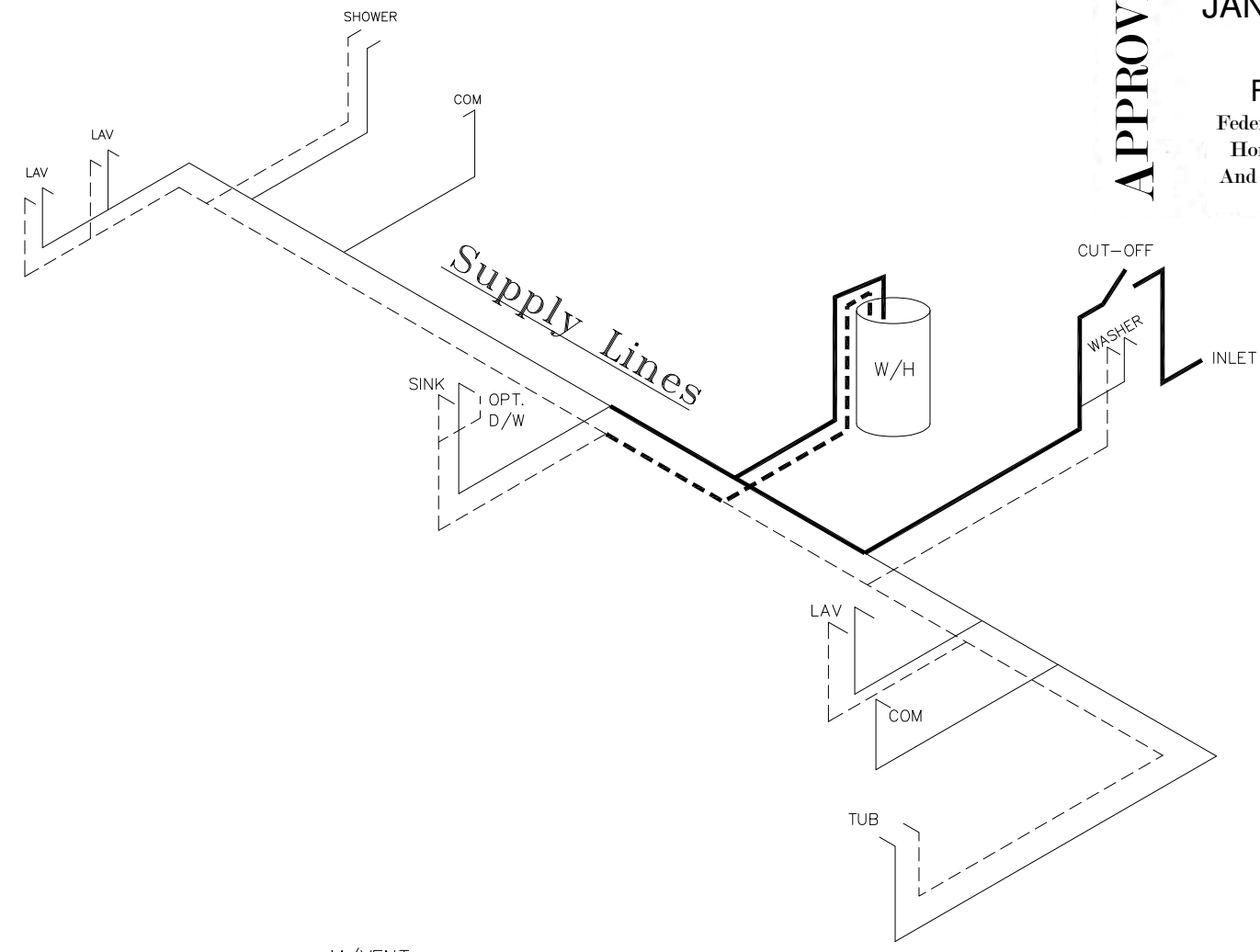
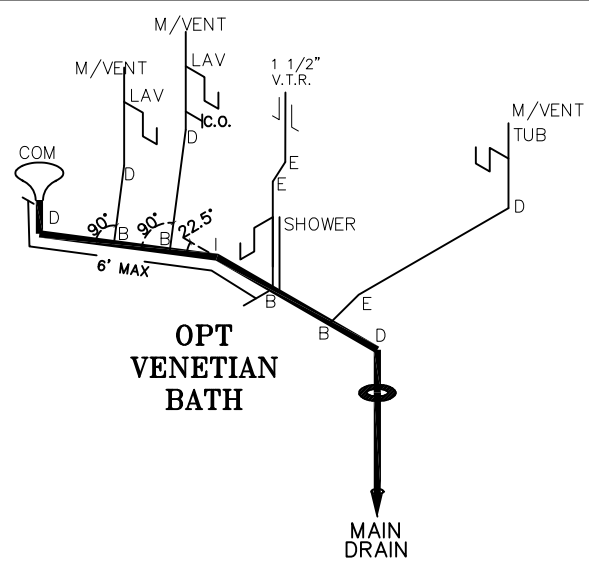
JAN 09 2024

REVISED

FP-16-2446

Federal Manufactured Home Construction And Safety Standards

6



LEGEND	
A	SHORT TURN T-Y
B	LONG TURN T-Y
C	1/4 BEND
D	LONG SWEEP 1/4 BEND
E	45 ELL
F	DBL. SANITARY TEE
G	4x3 CLOSET ELL
H	DOUBLE ELL
I	22 1/2° ELL
J	45° Y
K	LONG TURN STREET ELBOW
L	45 FTG ELL

D.W.V. LINE SIZE CHART	
	= 3"
	= 2"
	= 1 1/2"

NOTE:
DASHED LINES INDICATE HOT WATER
SOLID LINES INDICATE COLD WATER

= 3/4"
 = 1/2"

1165 SQ.FT. (STD PLAN "CONDITIONED")

CMH MANUFACTURING Product Designer: BF	Model #: MHR16763A	Drawing #:
	Date: 6/3/19	Scale: N/A
16" x 76' MHR/MAC		

D.W.V. AND SUPPLY LINES