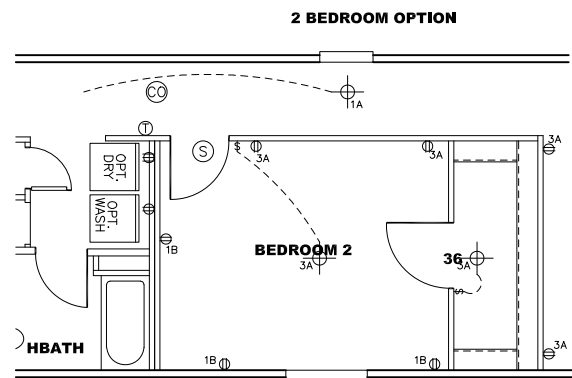
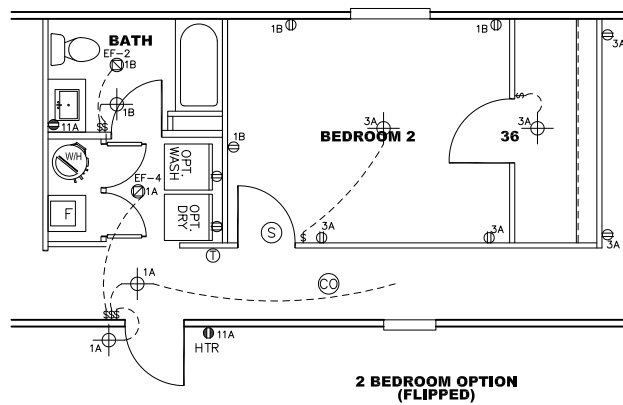
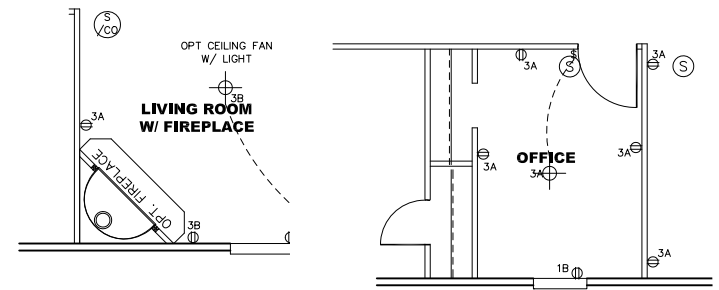


**DESIGNER SHOWER
BATH ONLY**

APPROVED

APPROVED

APR 04 2024
 REVISED
 FP-16-1957
 Federal Manufactured
 Home Construction
 And Safety Standards



- NOTES:
- ALL CIRCUITS SHOWN ARE FOR REFERENCE AND MAY BE CHANGED BASED ON OPTIONAL COMPONENTS INSTALLED IN THE HOME.
 - REFER TO DAPIA MANUAL FOR SYMBOL CHART.
 - EITHER LIGHT OR RECEPTACLE MUST CONNECT TO SWITCH.
 - EF-1= 50 CFM EXHAUST FAN REQUIRED FOR THERMAL ZONE III THERMAL ZONES I & II MAY USE FAN OR WINDOW W/1.5 SQ. FT. OPENABLE GLASS.
 - EF-2= 50 CFM EXHAUST FAN REQUIRED THERMAL ZONE I, II, AND III.
 - EF-3= 100 CFM RANGE EXHAUST FAN, SWITCH AT HOOD.
 - EF-4= WHOLE HOUSE VENTILATION REQUIREMENTS PER DAPIA MANUAL.
 - REFER TO DAPIA MANUAL OR THE MFG. INSTALLATION INSTRUCTIONS FOR PROPER WIRE SIZE AND BREAKER SIZE FOR SPECIFIC APPLIANCE AND MODEL BEING INSTALLED.
 - ALL SMOKE ALARMS TO BE LOCATED ON THE CEILING.
 - CARBON MONOXIDE ALARMS ARE ONLY REQUIRED WHEN HOME HAS EITHER FUEL BURNING APPLIANCES, IS GARAGE READY OR IS BASEMENT READY. REFERENCE DAPIA MANUAL FOR ADDITIONAL INFORMATION.
 - DIMENSIONS SHOWN ON PRINT ARE APPROXIMATE AND TO BE USED ONLY AS A GUIDELINE.

CIRCUIT	CIRCUIT #	WIRE	BREAKER	CIRCUIT	CIRCUIT #	WIRE	BREAKER	CIRCUIT	CIRCUIT #	WIRE	BREAKER
LIGHT/RECEP	1A, 3A	14-2	15-SP	WATER HEATER	4A,6B	SEE NOTE #8		BATHROOM	16 A	12-2	20-SP
KITCHEN	1B, 3B	12-2	20-SP	RANGE	5B,7A	SEE NOTE #8		OPT G/DISP	9B	SEE NOTE #8	
WASHER	2A,2B,12B	12-2	20-SP	FURNACE	6A,8A,B,10A,B	SEE NOTE #8		OPT SPA/WP/JAC	11A,B	SEE NOTE #8	
DRYER	5A,7B	SEE NOTE #8		OPT D/WASH	9A	SEE NOTE #8		FREEZER	13A	SEE NOTE #8	
RANGE HOOD/MICROWAVE	15B	SEE NOTE #8		SMOKE ALARM	4B	SEE NOTE #8					

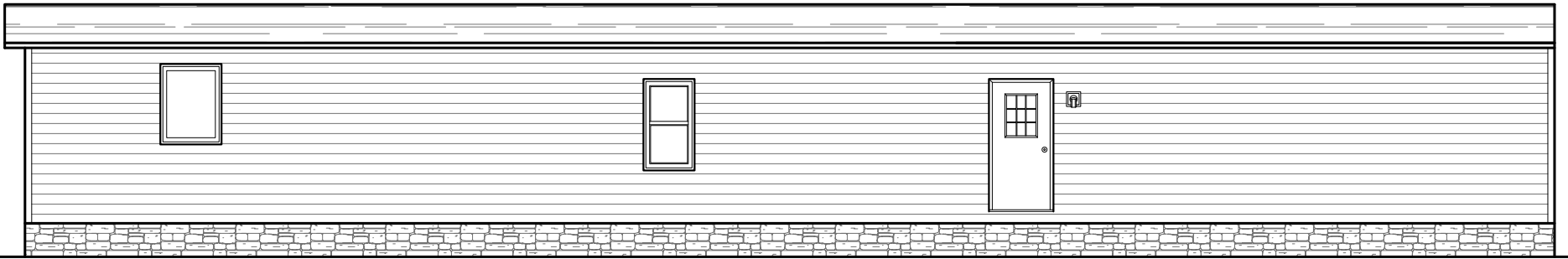
1165 SQ.FT. (STD PLAN "CONDITIONED")
N/A SQ.FT. (W/OPT. PORCH/RECESS "CONDITIONED")

CMH
MANUFACTURING

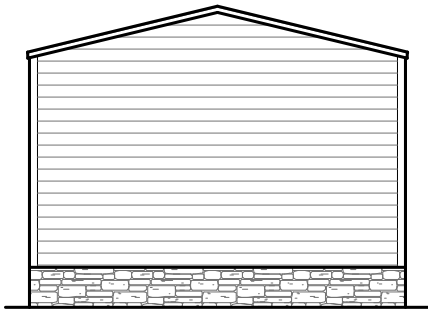
Model #: LFS167635 Drawing #: 225130
 Date: 5/9/16 Scale: N/A

Product Designer: JDC 16' x 76' BLUERIDGE-SOCIAL

ELECTRICAL PLAN-06



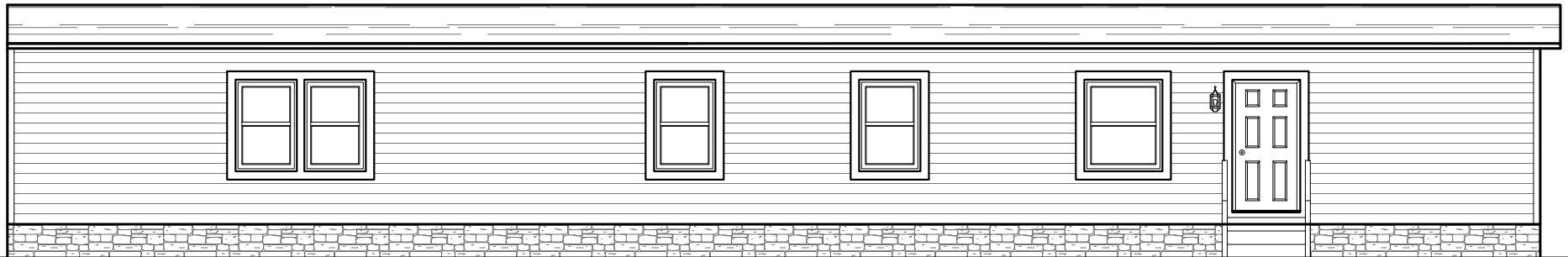
BACK ELEVATION



LEFT SIDE ELEVATION



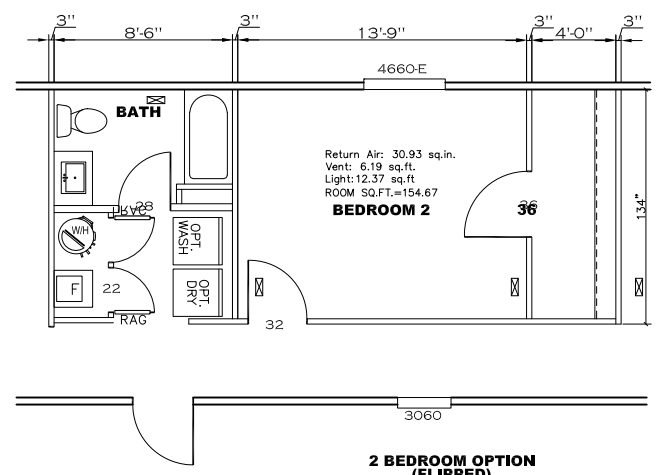
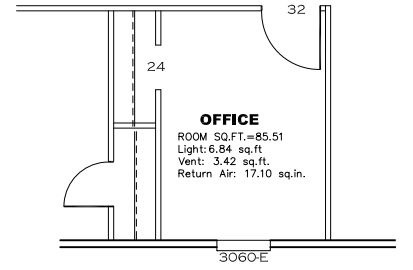
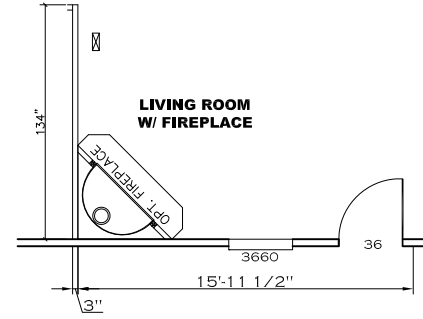
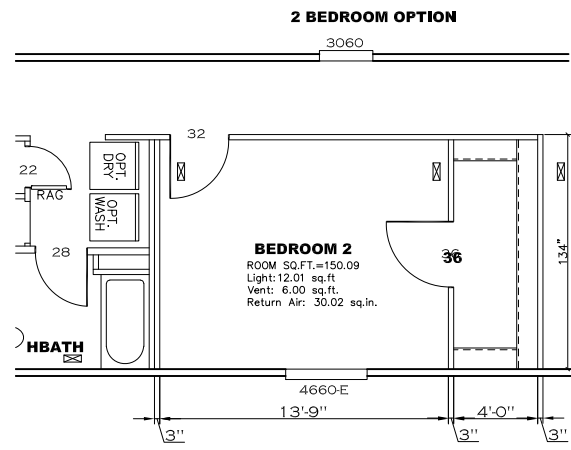
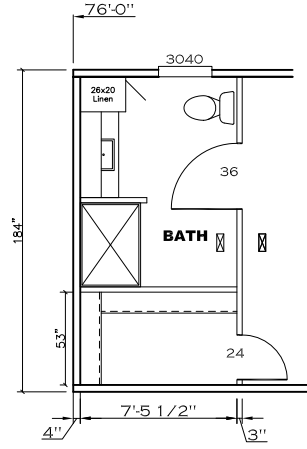
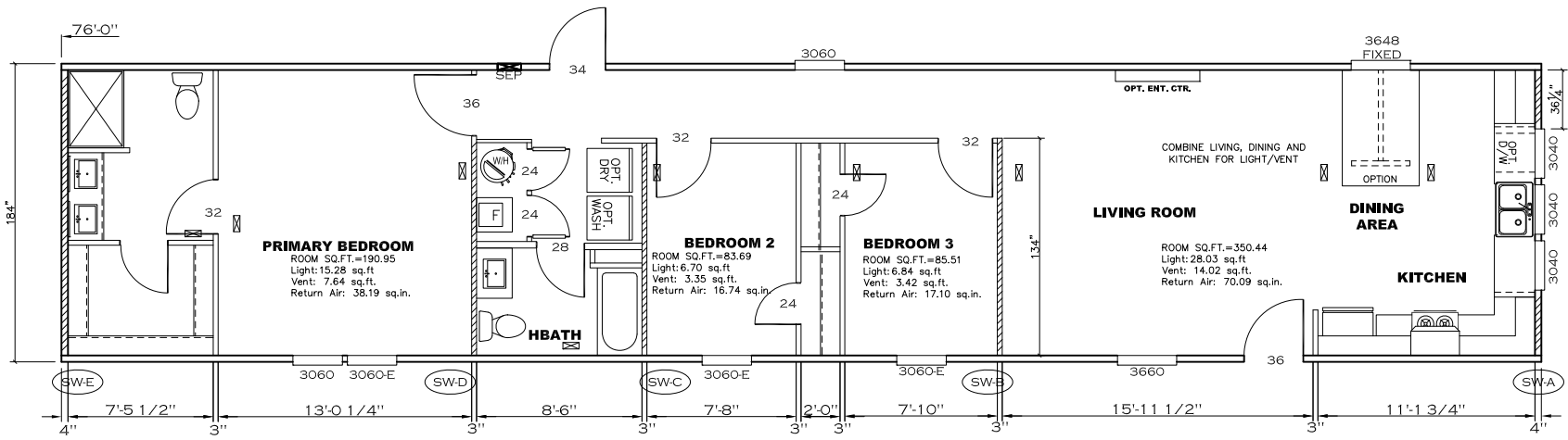
RIGHT SIDE ELEVATION



FRONT ELEVATION

		1190 SQ.FT. (STD PLAN "CONDITIONED")	
		N/A SQ.FT. (W/OPT. PORCH/RECESS "CONDITIONED")	
CMH MANUFACTURING	Model #: BLR16	Drawing #:	
	Date: 5/29/16	Scale: N/A	225130
Product Designer: JDC		16' x 76' BLUERIDGE-SOC	
ELEVATION			

OMIT BACK DOOR W/ OPT SGD



Model # 22s130
Box Width = 184" Single wide
Box Length = 76 ft. 99.5" 10" MIN IBEAM
No Skylights
No Porches
Joist Size = #2 sfp 2x6 Lags 9/16"

Minimum Joist Spacing 16"
No Offset Box
No Clerestory
No Origami Dormer
No Sunken Floor
No Parapet Roof

Version R13.20

Wind Zone 1 Standard Roof								96 inch sidewall
(3/8" sheathing only with 15 gax 1.5" at 5'110" oc. (197 pfl) Chords: 2x4 SPF #3 Top Plate spliced w/ 3x4 MCP & 1x6 SPF Rail spliced w/ 3x4 MCP								
Shearwall	Dist / Hitch	Length	PLF	# of Joists	Lags	Notes	SW1/SW2	
A	0'	76.5"	425	5	2/2	Split Shearwall	40 25/36 2'	
E	76'	172"	162	3	2/1			
Wind Zone 2 Standard Roof								96 inch sidewall
(3/8" sheathing only with 15 gax 1.5" at 5'110" oc. (197 pfl) Chords: 2x4 SPF #3 Top Plate spliced w/ 3x4 MCP & 1x6 SPF Rail spliced w/ 3x4 MCP								
Shearwall	Dist / Hitch	Length	PLF	# of Joists	Lags	Notes	SW1/SW2	
A	0'	76.5"	425	5	2/2	Split Shearwall	40 25/36 2'	
B	27.81'	128"	425	3	4/1			
D	54.81'	128"	425	3	4/1			
E	76'	124"	162	2	2/1			
Wind Zone 3 Standard Roof								96 inch sidewall
(3/8" sheathing only with 15 gax 1.5" at 5'110" oc. (197 pfl) Chords: 2x4 SPF #3 Top Plate spliced w/ 3x4 MCP & 1x6 SPF Rail spliced w/ 3x4 MCP								
Shearwall	Dist / Hitch	Length	PLF	# of Joists	Lags	Notes	SW1/SW2	
A	0'	76.5"	425	5	3/3	Split Shearwall	40 25/36 2'	
B	27.81'	128"	425	3	4/1			
C	46.06'	128"	324	2	3/1			
D	54.81'	128"	324	2	3/1			
E	76'	149"	162	2	2/1			

APPROVED



APR 04 2024
REVISED
FP-16-1957
Federal Manufactured
Home Construction
And Safety Standards

APPROVED

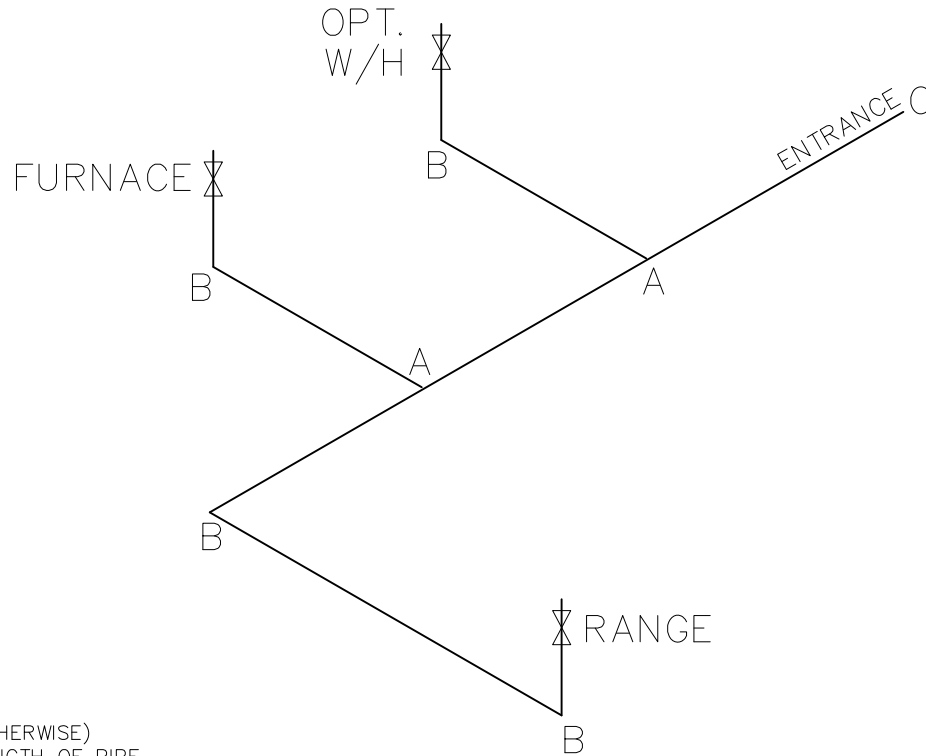
1165 SQ.FT. (STD PLAN "CONDITIONED")
N/A SQ.FT. (W/OPT. PORCH/RECESS "CONDITIONED")

CMH MANUFACTURING	Model #: LFS167635	Drawing #:
Product Designer: JDC	Date: 5/9/16	Scale: N/A
		22S130

FLOOR PLAN

LEGEND		APPLIANCE BTU'S RATINGS MAX. INPUT	
SYM	FITTINGS		
A	TEE	FURNACE	70,000 BTU'S
B	90 ELL	W/H	36,000 BTU'S
X	VALVE	RANGE	56,000 BTU'S
C	CAP	DRYER	N/A BTU'S

MDL=40'



APPROVED

HWG

APPROVED

APR 04 2024
REVISED

FP-16-1957
Federal Manufactured
Home Construction
And Safety Standards

6

GAS LINE SIZE CHART	
	= 1"
	= 3/4"

NOTES:

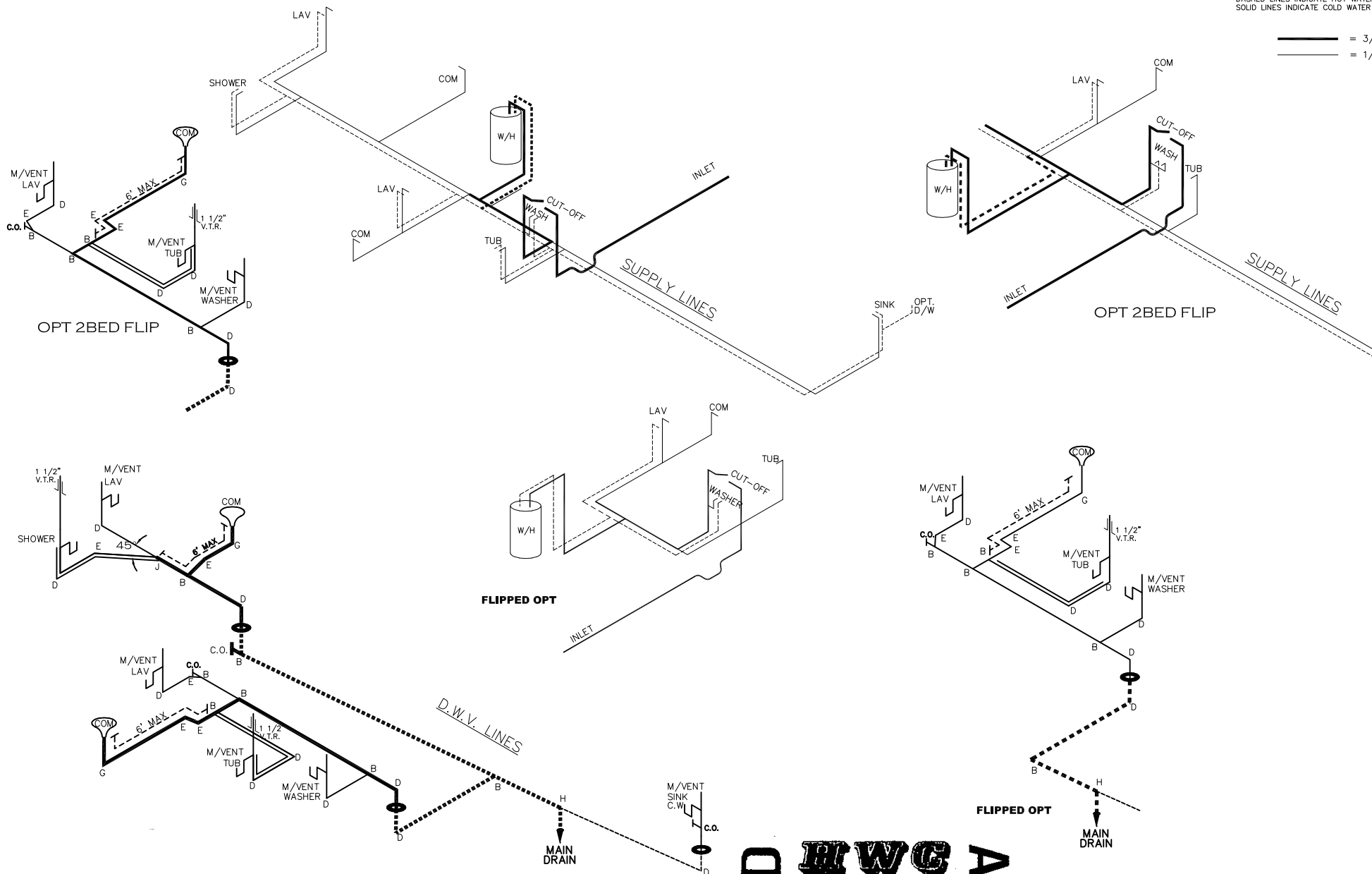
- 1) ALL PIPE IS 3/4" I.D.CAST (EXCEPT WHERE NOTED OTHERWISE)
- 2) MDL=MAX. DETERMINED LENGTH OF PIPE
- 3) FITTING MAY BE ADDED OR SUBTRACTED TO TRAVERSE VARIATIONS IN AXLE QUANTITY, PLACEMENT, AND FRAME TYPE.
- 4) INLET LOCATION MAY VARY TO STAY WITHIN MAX. DETERMINED LENGTH

1165 SQ.FT. (STD PLAN "CONDITIONED")
N/A SQ.FT. (W/OPT. PORCH/RECESS "CONDITIONED")

CMH MANUFACTURING	Model #: LFS167635	Drawing #:
	Date: 5/29/16	Scale: N/A 225130
Product Designer: JDC	16' x 76' BLUERIDGE-SOCIAL	
GAS LINE DETAIL		

DASHED LINES INDICATE HOT WATER
SOLID LINES INDICATE COLD WATER

— = 3/4"
— = 1/2"



LEGEND	
A	SHORT TURN T-Y
B	LONG TURN T-Y
C	1/4 BEND
D	LONG SWEEP 1/4 BEND
E	45 ELL
F	DBL. SANITARY TEE
G	4x3 CLOSET ELL
H	DOUBLE ELL
I	22 1/2" ELL
J	45° Y
K	LONG TURN STREET ELBOW
L	45 FTG ELL

D.W.V. LINE SIZE CHART	
—	= 3"
—	= 2"
—	= 1 1/2"

APPROVED

HWC

APPROVED

REVISED
23 APR 2020
FP-16-2209

Federal Manufactured
Home Construction
And Safety Standards

1190 SQ.FT. (STD PLAN "CONDITIONED")	
N/A SQ.FT. (W/OPT. PORCH/RECESS "CONDITIONED")	
CMH MANUFACTURING	Model #: RHP16763F Date: 1/17/17 Scale: N/A
Product Designer: JDC	6' x 7'6" RHP
D.W.V. and Supply Lines	
2 / REVISION ECR-N/A 4/22/20 BF	

26. Insulation

Location	Thickness	Material, Type, and Method of Installation	Vapor Barrier
Roof			
Ceiling			
Wall			
Floor			

27. Miscellaneous: (Describe any main dwelling materials, equipment, or construction items not shown elsewhere; or use to provide additional information where the space provided was inadequate. Always reference by item number to correspond to numbering used on this form.)

Hardware (make, material, and finish.)

Special Equipment (State material or make, model and quantity. Include only equipment and appliances which are acceptable by local law, custom and applicable FHA standards. Do not include items which, by established custom, are supplied by occupant and removed when he vacates premises or chattles prohibited by law from becoming realty.)

Porches

Terraces

Garages

Walks and Driveways

Driveway width _____ base material _____ thickness _____ surfacing material _____ thickness _____
 Front walk width _____ material _____ thickness _____ Service walk width _____ material _____ thickness _____
 Steps material _____ treads _____ risers _____ Cheek walls _____

Other Onsite Improvements

(Specify all exterior onsite improvements not described elsewhere, including items such as unusual grading, drainage structures, retaining walls, fence, railings, and accessory structures.)

Landscaping, Planting, and Finish Grading

Topsoil _____ thick front yard side yards rear yard to _____ feet behind main building
 Lawns (seeded, sodded, or sprigged) front yard _____ side yards _____ rear yard _____
 Planting as specified and shown on drawings as follows:
 _____ Shade trees deciduous _____ caliper _____ Evergreen trees _____ to _____ B & B
 _____ Low flowering trees deciduous _____ to _____ _____ Evergreen shrubs _____ to _____ B & B
 _____ High-growing shrubs deciduous _____ to _____ _____ Vines, 2-year _____
 _____ Medium-growing shrubs deciduous _____ to _____ Other _____
 _____ Low-growing shrubs deciduous _____ to _____

Identification—This exhibit shall be identified by the signature of the builder, or sponsor, and/or the proposed mortgagor if the latter is known at the time of application.

Date (mm/dd/yyyy) _____ Signature _____

Signature _____