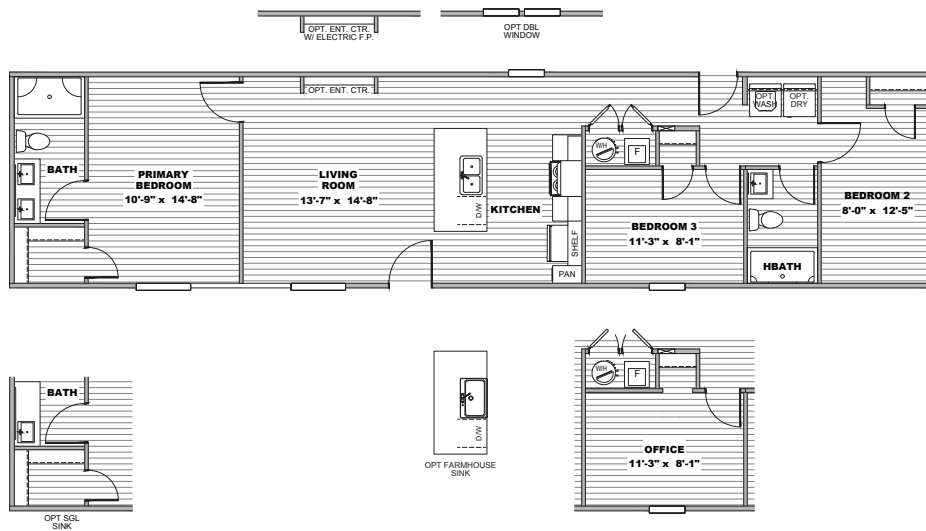


Foothills 66'

3 beds / 2 baths / 1,012 sq. ft. / 16x66

Foothills
SERIES



Maynardville standards

- Shaw® vinyl flooring throughout
- GAF® architectural shingles
- 6-panel steel front door with storm
- 6-light cottage rear door with storm
- Lined overhead cabinets
- 1-piece fiberglass hall bath tub/shower
- Fiberglass tubs and showers in baths
- Porcelain lavatories - double sink standard in primary bath
- Front exterior faucet

Available upgrades

Room upgrades

- Double windows in the dining room
- Entertainment center with or without electric fireplace
- Single sink option in primary bath

Exterior upgrades

- Rear exterior faucet
- Hitch end elevation options
- Craftsman front door with storm door
- OSB exterior wrap

Interior upgrades

- Water cutoffs throughout
- Cabinet above refrigerator
- Stainless steel farmhouse sink with pull-down sprayer
- Stainless steel side-by-side refrigerator
- Rangehood microwave

Customer Name _____

Customer County/State _____

Customer Email _____

Customer Signature _____



eBuilt

The home series, floor plans, photos, renderings, specifications, features, materials and availability shown will vary by location, and are subject to change without notice.

Clayton
maynardville